

Group discussion:

## **Bay Delta Water Quality Control Plan**

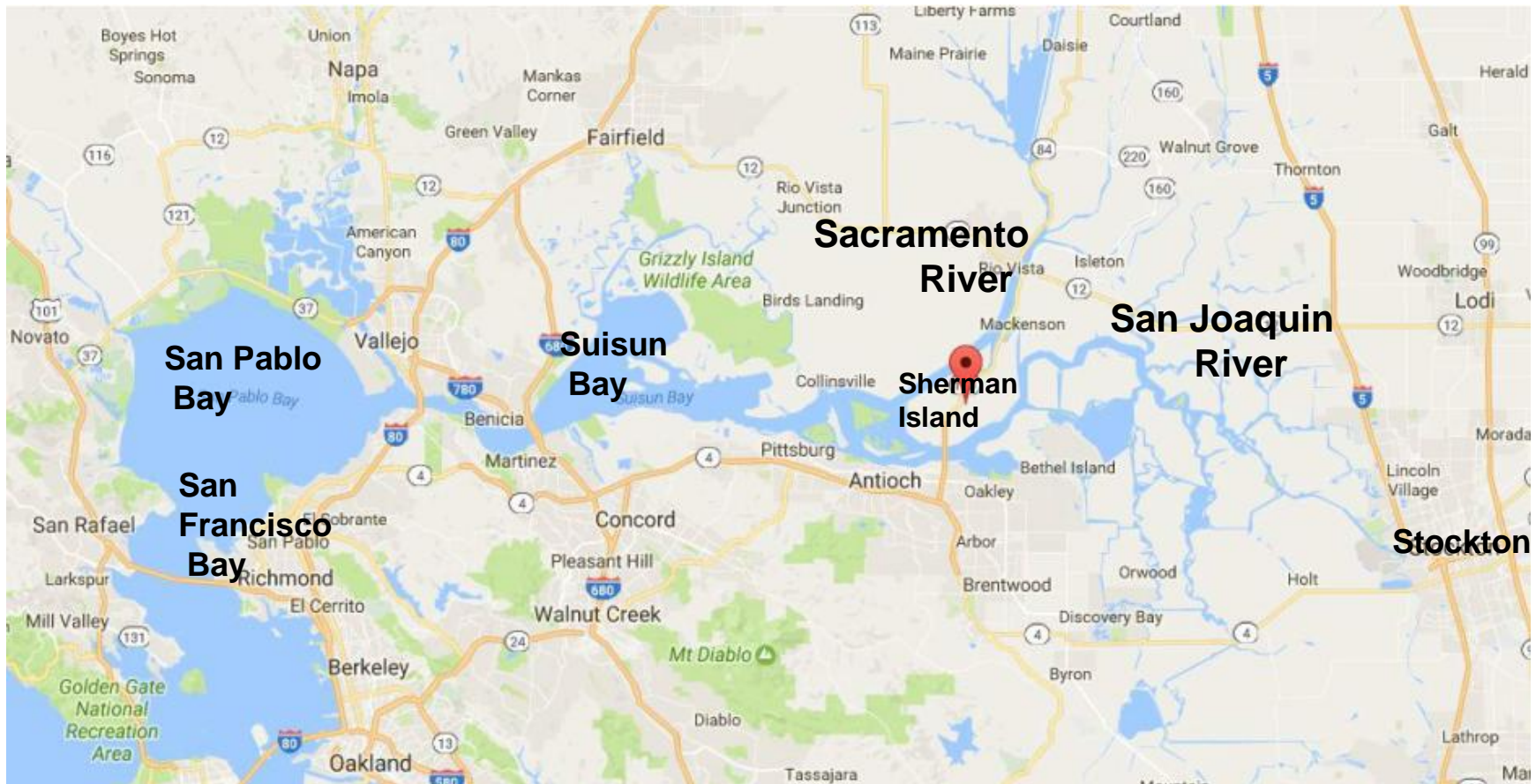
- \* Introduction to the Bay Delta
- \* Petitions
- \* Individual comments?

Prepared by Mei-Ling Shek

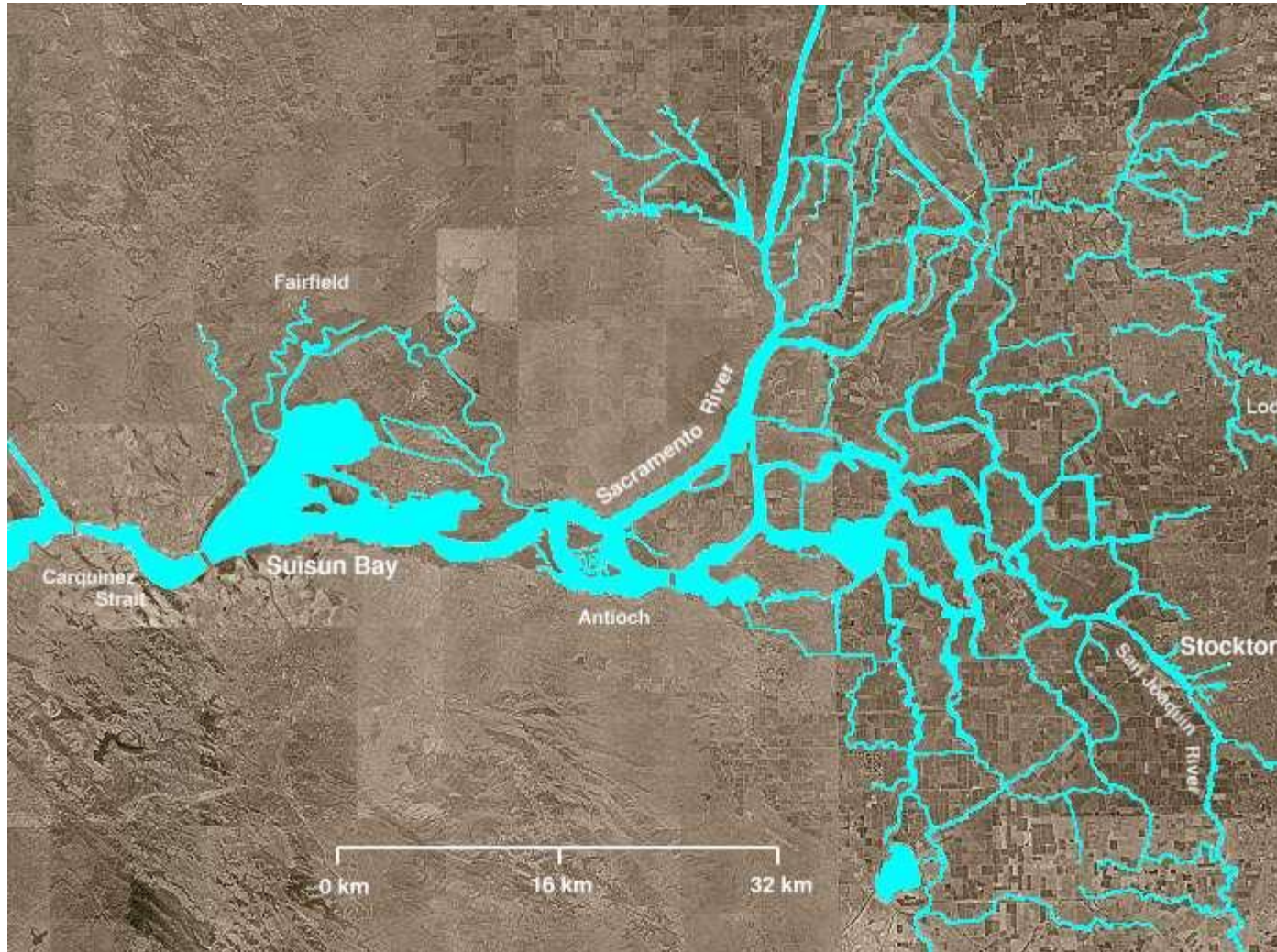
2017 February 9

# Introduction to the Bay Delta

1100 sq miles (land and water)

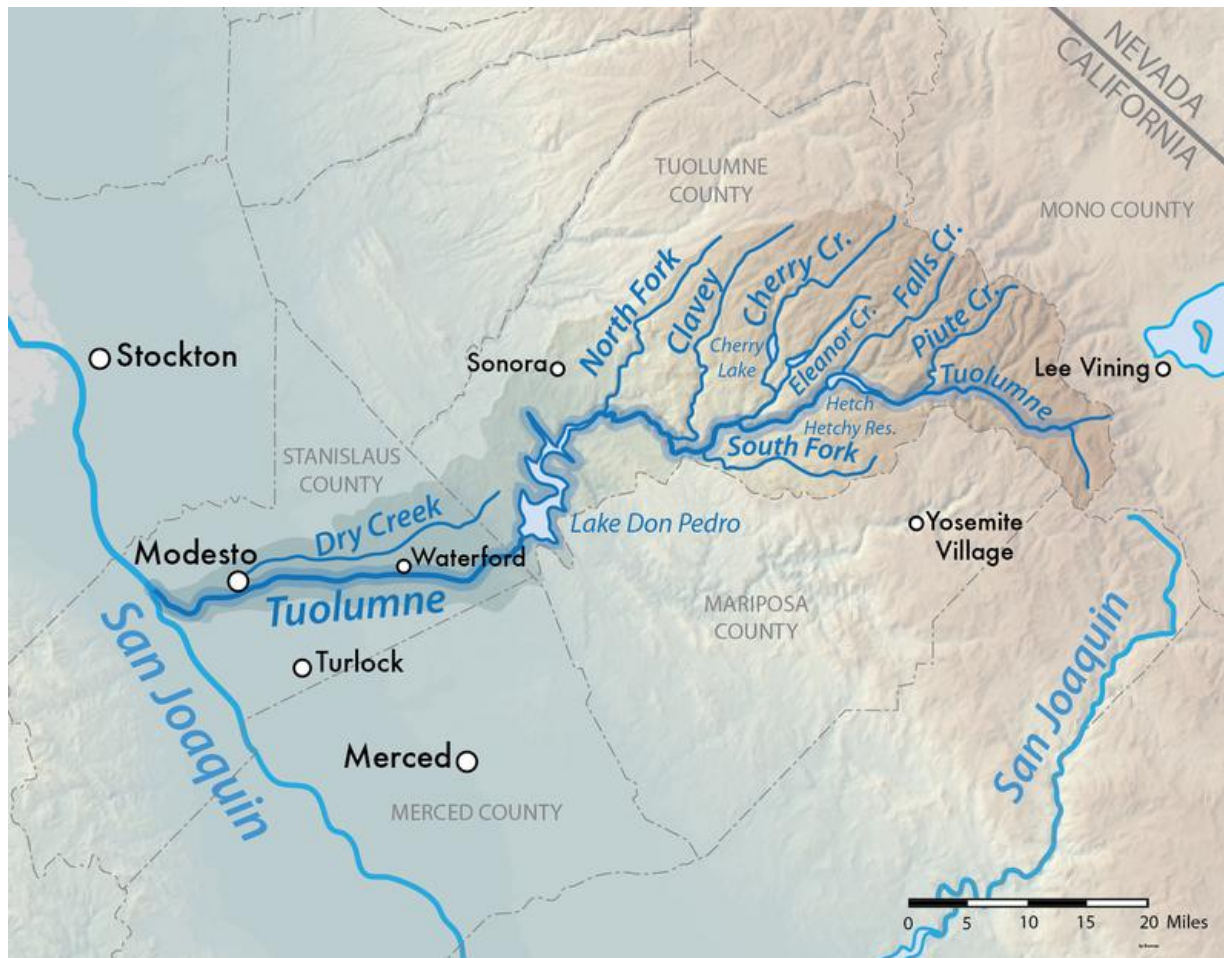


## Introduction to the Bay Delta



By English Wikipedia user Decumanus, CC BY-SA 3.0, <https://commons.wikimedia.org/w/index.php?curid=4520203>

Tuolumne is one of the tributaries of San Joaquin



Tuolumne is one of the tributaries of San Joaquin

## **The Mighty T - Tuolumne River**

Video duration: 26:56 Aired: 10/26/16

<http://www.pbs.org/video/2365874717/>

Explore one of northern California's most dramatic and important wild rivers! Outdoor expert Tom Stienstra follows the Tuolumne River from the melting Lyell Glacier atop Yosemite's high country to the Golden Gate Bridge. Meet scientists confronting saltwater intrusion into the Delta estuary, which threatens the survival of a wildlife paradise that requires freshwater.

# Bay Delta Water Quality Control Plan-

## What you need to know

<https://www.youtube.com/watch?v=ofiJ-il7uJE&feature=youtube>

(Tuolumne River Trust, 9:30 min video)

On September 15, 2016, the State Water Board proposed revisions to the [Bay Delta Water Quality Control Plan](#) aimed at updating minimum flow releases for the San Joaquin River and its major tributaries. The new Plan calls for 40% of unimpaired flow (what would naturally flow down our rivers) between February and June on the lower San Joaquin, Stanislaus, Tuolumne and Merced Rivers. Currently, the three tributaries respectively see about 40%, 21% and 25% of their natural flow enter the San Joaquin. Flows could range from 30-50% depending on how well non-flow measures (such as habitat restoration) are at reaching established goals and objectives.

# Petition by Tuolumne River Trust

(Peter Drekmeier)

Goal of 1000 signatures reached

Dear Chair Felicia Marcus and State Water Board Members:

Thank you for your efforts to revive the San Francisco Bay-Delta and the rivers that provide it with essential freshwater inflow. We believe at least 50% of unimpaired flow on the Lower San Joaquin River and its three major tributaries -- the Tuolumne, Stanislaus and Merced Rivers -- will be necessary to improve water quality and conditions for fish and wildlife. The updated Bay Delta Water Quality Control Plan will likely be our last chance to restore populations of salmon, steelhead and other aquatic organisms. Please do everything in your power to help bring our amazing estuary back to life!

<https://www.ipetitions.com/petition/revive-our-rivers-and-the-bay-delta>

**Tell the State Water Board to Reduce Delta Water Exports and Increase Delta Flows!**



- [http://restorethedelta.nationbuilder.com/bay\\_delta\\_water\\_quality\\_petition](http://restorethedelta.nationbuilder.com/bay_delta_water_quality_petition)



## Points made in Restore the Delta petition

- **Join us in telling the State Water Board that the Phase I update of the plan must follow these points:**
- **1) A permanent reduction of exports must happen to protect the Delta.**
- **2) We do not want to see a weakening of salinity standards in the South Delta.**
- **3) The State Water Board must consider environmental justice communities in terms of drinking water and domestic use.** Phase 1 Recirculated Draft SED fails to consider environmental justice communities in chapters 5 and 9 (hydrology/water quality and groundwater).
- **4) We believe that water flows on the San Joaquin River must be adequate to restore and protect fisheries—and to protect the public trust value of the Bay-Delta estuary.** A 40% restoration of flows will not accomplish this end. Science tells us that we need 60% of flows restored on the San Joaquin River for the health of the Bay-Delta.
- [http://restorethedelta.nationbuilder.com/bay\\_delta\\_water\\_quality\\_petition](http://restorethedelta.nationbuilder.com/bay_delta_water_quality_petition)

# Comments on the proposed Bay-Delta Plan Update and draft SED

**Written comment due by noon on Friday, March 17, 2017.**

Comments may be sent to [commentletters@waterboards.ca.gov](mailto:commentletters@waterboards.ca.gov)

Please include “Comment Letter – 2016 Bay Delta Plan  
Amendment & SED” in the subject line.

- [http://www.waterboards.ca.gov/waterrights/water\\_issues/programs/bay\\_delta/bay\\_delta\\_plan/water\\_quality\\_control\\_planning/2016\\_sed/index.shtml#sed](http://www.waterboards.ca.gov/waterrights/water_issues/programs/bay_delta/bay_delta_plan/water_quality_control_planning/2016_sed/index.shtml#sed)

How about sending a copy of the letter to the State Water Board to:

- Senate Natural Resources and Water Committee ?
- Our elected state assembly members and senators?

Or how about having our own EGG petition?